

MIDTOWN KC STREETCAR ANNEX

at 38th & Baltimore

WHAT is the Midtown Annex?

The 38th Street and Baltimore Avenue parcel was acquired in 2020 for the purpose of supporting the KC Streetcar Main St Extension and installing a Traction Power Substation (TPSS). TPSS stations are required to power the Streetcar. In addition to a TPSS site, this property will include a maintenance building, i.e. the Midtown Streetcar Annex. The property will be fenced, screened, and landscaped. The existing sidewalk will be replaced as part of the project.

WHY is this work being proposed?

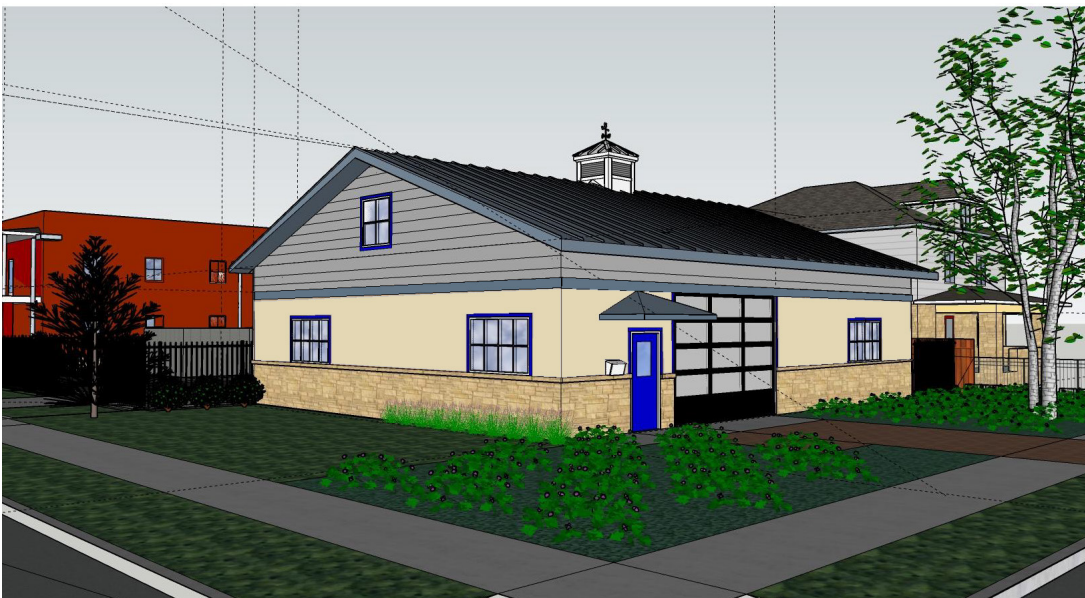
As the KC Streetcar system expands to the south, there is a need for a satellite maintenance and operations facility to support expanded operations and maintenance needs, and to ensure efficient and timely response to needs on the route.

WHAT activities will occur here?

The Midtown Streetcar Annex will include one of five TPSS sites along the extension. KC Streetcar staff will utilize the building for a small field office to support maintenance-of-way activities, storage of equipment required to support maintenance and operation's needs (such as Brushy McBrushface, and emergency response equipment), and supplies to support maintenance of stations and platforms.

HOW will this impact you?

The maintenance facility and fencing will occupy approximately two-thirds of the 38th Street & Baltimore Avenue parcel. Streetcar personnel will access the site periodically during streetcar operating hours. The site will have security lighting and the proposed fencing would screen the TPSS site.



[View from Northwest](#)

Above is the final design of the Midtown KC Streetcar Annex at 38th Street & Baltimore Avenue.

For more
information, visit
www.kcstreetcar.org
or contact
info@kcstreetcar.org



@KCStreetcar

KC Streetcar

Main Street Extension

