

# KC STREETCAR MAIN STREET EXTENSION QUARTERLY REPORT

## ENGAGEMENT HIGHLIGHTS

	Third Quarter	Project to Date
Stakeholder Meetings	4	67
Targeted Stakeholder Emails Sent	235	1,459
Door-to-Door Outreach	191	1,001

## PROJECT PROGRESS

Overall Progress to Date	58%
Track Constructed to Date	22,409 ft. (61%)
OCS Foundations Drilled & Poured to Date	225/353 (64%)

## GREEN INFRASTRUCTURE CONSTRUCTION BEGINS!

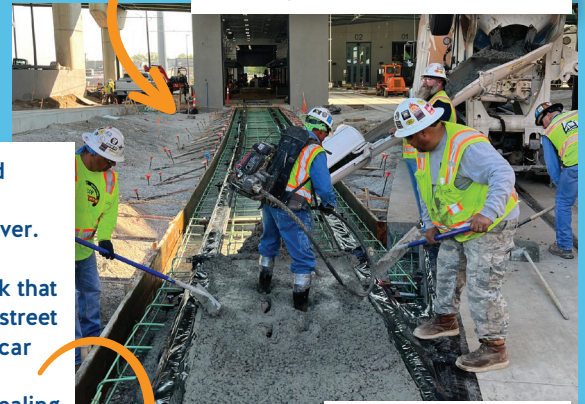
As part of the KC Streetcar Main Street Extension project, green infrastructure (GSI) elements are included at two locations along the corridor to better manage stormwater drainage and beautify the surrounding area with native plants and landscaping. The first location of GSI on the project is at the intersection of Main Street and Memorial Drive. Green infrastructure elements will also be incorporated at the Vehicle Maintenance Facility and at the Midtown Annex Building near Main Street and 38th Street - which will support expanded maintenance and operations needs.

## CONSTRUCTION HIGHLIGHTS

Seven of 15 station stop platforms have been completed with two more finishing in the next month.

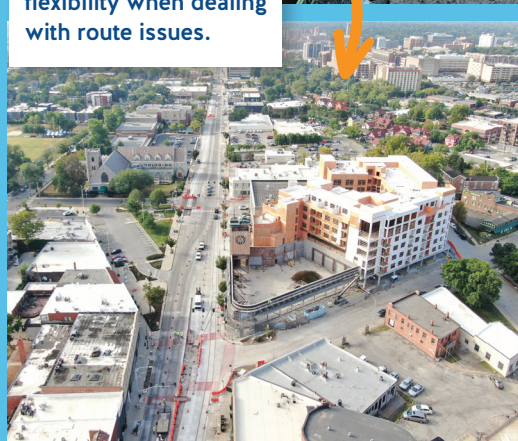


Crews poured concrete for track 4 into new maintenance Bay 4 at the Vehicle Maintenance Facility. The new operations center is complete and work started in the maintenance and administrative building.



Crews completed phase one of the Westport Crossover. The Westport Crossover is track that crosses over the street and allows streetcar operations more flexibility when dealing with route issues.

Construction directly in front of schools on the corridor was completed during the summer months to help minimize impacts. This included intersection work at Armour Boulevard, track construction just south of 40th Street, and TPSS site work near UMKC.



Scan for more images of our progress

Let's get social!  
@BuildKCSC



[buildKCstreetcar.com](http://buildKCstreetcar.com)



A Herzog/Stacy and Witbeck Joint Venture

# What does expansion at the KC Streetcar Singleton Yard Vehicle Maintenance Facility entail?

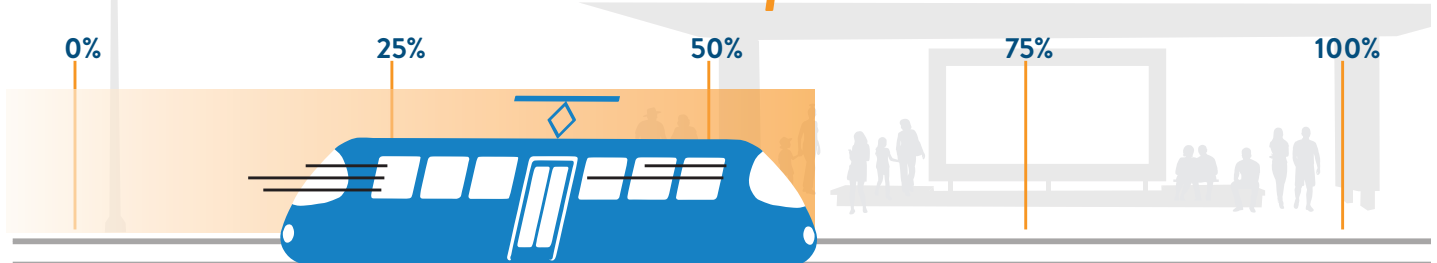


Make way for more streetcars! The upgrades to the KC Streetcar Singleton Yard Vehicle Maintenance Facility (VMF) will expand the current structure to 38,225 square feet in order to accommodate a growing fleet, including new equipment and spare parts. By mid-2024, the streetcar fleet will grow from 6 to 14 streetcar vehicles.

In addition to constructing additional tracks, bays, and equipment storage, construction also includes expansion of the operations center and administrative offices. Expansion of the VMF is anticipated to be complete by Spring 2024.

## Overall Construction Progress

**58% Complete\***



This number includes ALL aspects of the project - track, power systems, pedestrian upgrades, future station stops, and underground electrical work.

*\*Updated as of September 30, 2023*